

クイック パック

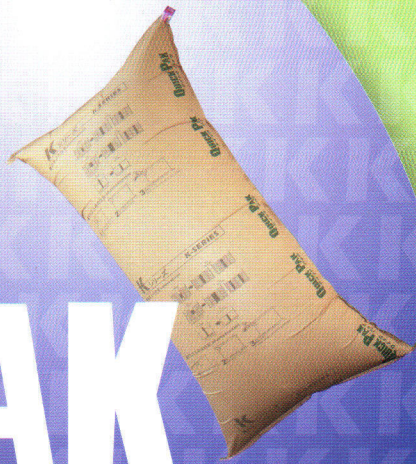
QUICK PAK

快速充気袋 AIR DUNNAGE BAG

エアダンネージバッグ

K

シリーズ
SERIES



Following the tradition of Q-series
Prolonging the tradition of C-series

New member of our product family

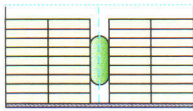
Quick Pak K-series



Ushio

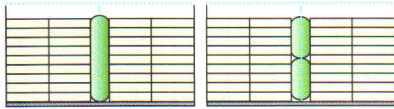
QUICK PAK FIT FOR VARIOUS TYPES OF CARGO

❌ Inadequate Fitting

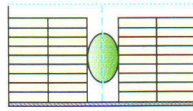


Q-Pak too short

✅ Correct Fitting

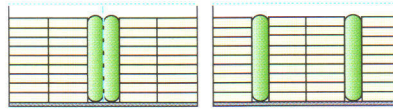


❌ Inadequate Fitting

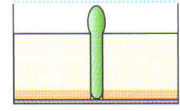


Q-Pak too small
(gap too wide)

✅ Correct Fitting

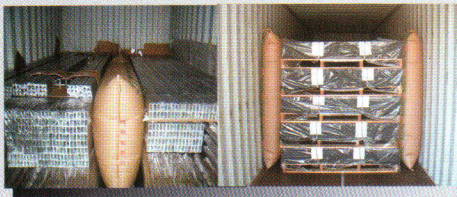
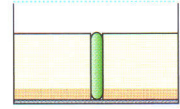


❌ Inadequate Fitting



Q-Pak too big

✅ Correct Fitting



QUICK PAK SPECIFICATIONS

TYPE (Model)	SIZE (WxL)	APPLICABLE WIDEST BROKEN SPACE (mm)	WORKINGLOAD (kg/cm ²)	BREAKINGLOAD (kg/cm ²)*	WEIGHT PER BAG (g/pc)	PIECES OF BAG IN PACKAGE (pc/ctn★)	TOTAL WEIGHT PER PACKAGE (kg/ctn)
K-1000	550 x 1000	250	0.05~0.2	1.2	290	100/ctn A	32
K-1200	800 x 1200	350	0.05~0.2	1.2	520	50/ctn A	29
K-1500	1000 x 1500	450	0.05~0.2	1.2	800	40/ctn B	34
K-1800	1000 x 1800	450	0.05~0.2	1.2	930	30/ctn B	30
K-2100	1000 x 2100	450	0.05~0.2	1.2	1090	30/ctn B	35
K-2300	1000 x 2300	450	0.05~0.2	1.2	1160	25/ctn B	31

★ Carton Size: ctn A 1280 L x 560 W x 200 H (mm); Weight 3kgs
ctn B 1110 L x 560 W x 200 H (mm); Weight 2kgs

* 200mm an opening

- MANUFACTURER -

USHIO CO., LTD

〒652-0813, 3-27, 2-Chome, Hyogo-cho,
Hyogo-ku, Kobe, JAPAN
Tel: 078-651-7210 Fax: 078-651-2619
<http://www.ushio-co.com>

- GENERAL AGENT -

USHIO LIMITED

Room 2406, 24/F, Fook Yip Building,
53-57 Kwai Fung Crescent,
Kwai Chung, N.T., HONG KONG
Tel: (852)2406-0369 Fax: (852)2406-0329
E-mail: info@ushio.hk <http://www.quickpak.hk>

- AGENT -

Anrisa
Electronics Pte Ltd

408A Joo Chiat Rd, Singapore 427635

Tel : +65 6348-0957 www.anrisa.com

Fax: +65 6348-0937 email: anrisa@anrisa.com